

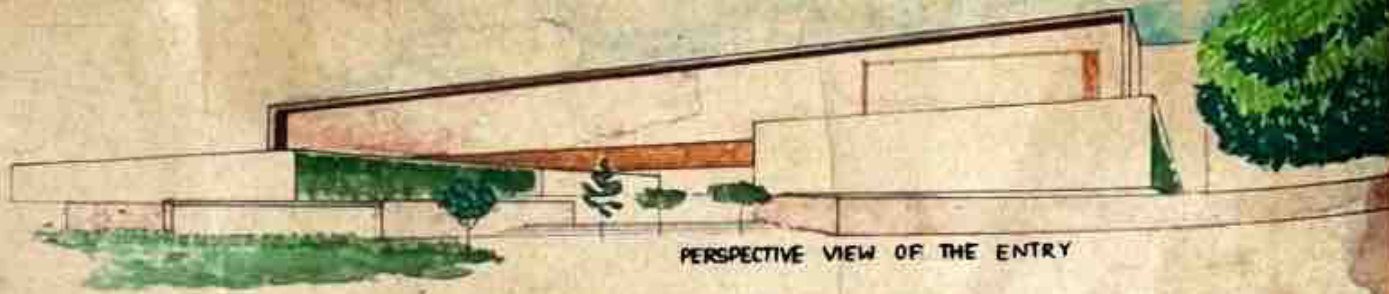
माता नि पचेदी

इपजारत
गुजरात

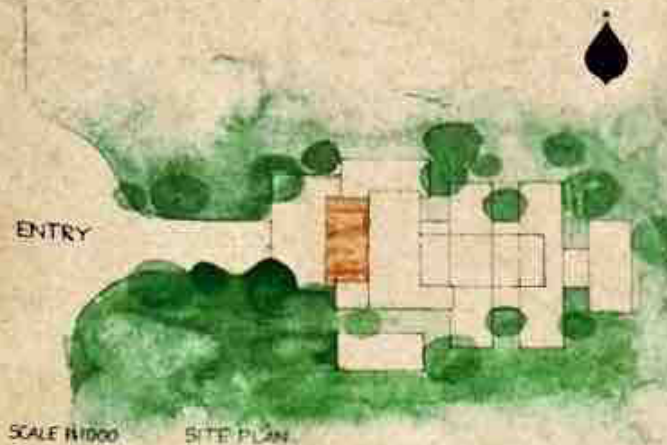


MATA NI PACHEDI IS A TRADITIONAL TEXTILE ART FROM GUJARAT, INDIA KNOWN AS KALAMKARI OF GUJARAT. IT MEANS BEHIND THE MOTHER DEESS AND IS USED AS A TEMPLE CLOTH OR SHRINE HICKERS TO DEPICT GODDESSES AND MYTHOLOGICAL STORIES. ORIGINATING FROM THE VAGHRI COMMUNITY, THIS COMMUNITY ART WAS CREATED AS A FORM OF WORSHIP WHEN MARGINALIZED GROUPS WERE DENIED ENTRY INTO TEMPLES. THE PAINTING IS DONE ON COTTON CLOTH USING NATURAL DYES. ARTISTS OUTLINE THE DESIGN IN BEAK LEAVE BAMBOO PENS AND FILL IT WITH RED, PINK AND OTHER EARTHY TONES MADE FROM HERBS AND MINERALS. IT USUALLY SHOWS GODDESS FEEDING DEVOREES, ANIMALS AND NATIVE. MATA NI PACHEDI IS MAINLY USED IN FOLK TEMPLES, RITUALS AND FESTIVALS ACROSS GUJARAT. TEACHING IT IN SCHOOLS HELPS STUDENTS CONNECT WITH THEIR CULTURE, ENHANCES CREATIVITY, STORYTELLING, EMPATHY AND SUSTAINABILITY. IT BUILDS PROUDLY TRADITION AND HELPS

The northstar school



PERSPECTIVE VIEW OF THE ENTRY



SCALE 1:1000 SITE PLAN

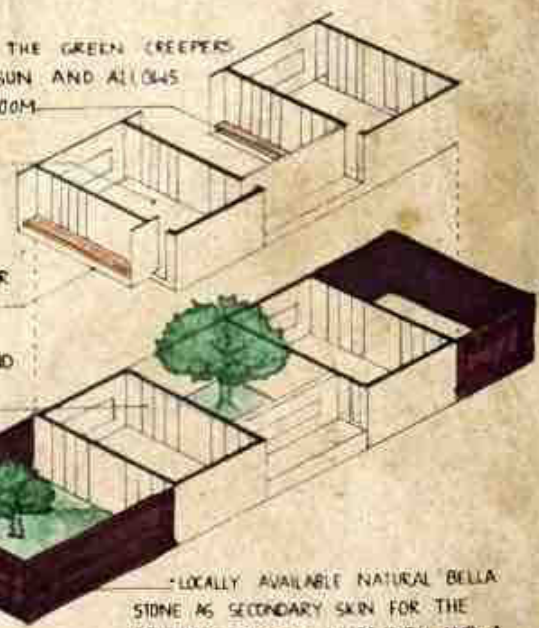
IDEOLOGY
 THE DESIGN FOUNDATIONS AT NORTHSTAR LIE ON IDEOLOGIES OF USING REGIONAL REFERENCE TO DEFINE BUILT FORM AND EXPLORING CONTEMPORARY DESIGN WITH LOCAL MATERIAL, FINDING SIMPLISTIC SOLUTIONS FOR COMPLEX DESIGN PROBLEMS

LOCATION
 KASTERBADHAM RAJKOT BHAVNAGAR HIGHWAY, RAJKOT GUJARAT INDIA

PROJECT DETAILS
 ARCHITECTS SHANMUGAM ASSOCIATES
 AREA 18058 M²
 YEAR 2017

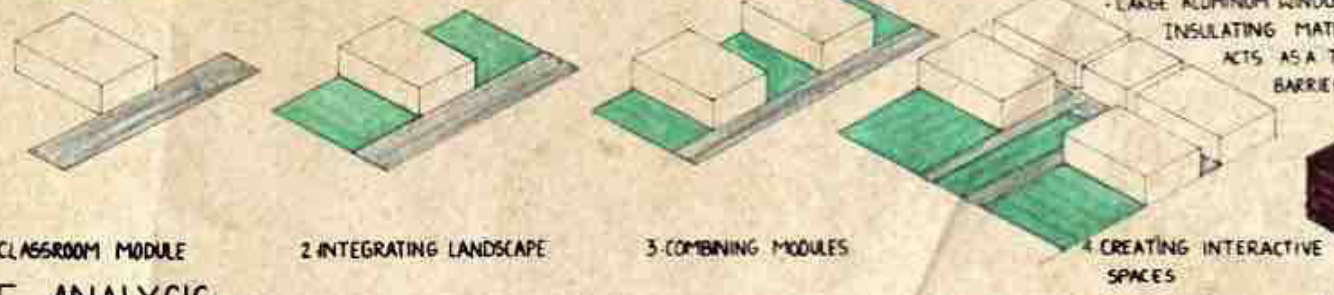
MATERIAL

- MESH A SECONDARY SKIN FOR THE GREEN CREEPERS THAT HELPS TO AVOID HARSH SUN AND ALLOWS ENOUGH LIGHT TO THE CLASSROOM
- LOCALLY AVAILABLE KOTA STONE FLOORING
- 5' CANTILEVER PROVIDES SHADE FOR THE GROUND FLOOR LEVEL. THE CANTILEVER THUS ACCOMMODATES A PLANTER BOX CREEPERS IN FIRST FLOOR LEVEL
- LARGE ALUMINUM WINDOWS - AN INSULATING MATERIAL AND ACTS AS A THERMAL BARRIERS



- LOCALLY AVAILABLE NATURAL BELLA STONE AS SECONDARY SKIN FOR THE PREMISES ACTS AS A SECURITY AND A BARRIER FROM BOTH HARSH SUN AND WIND

DESIGN DEVELOPMENT



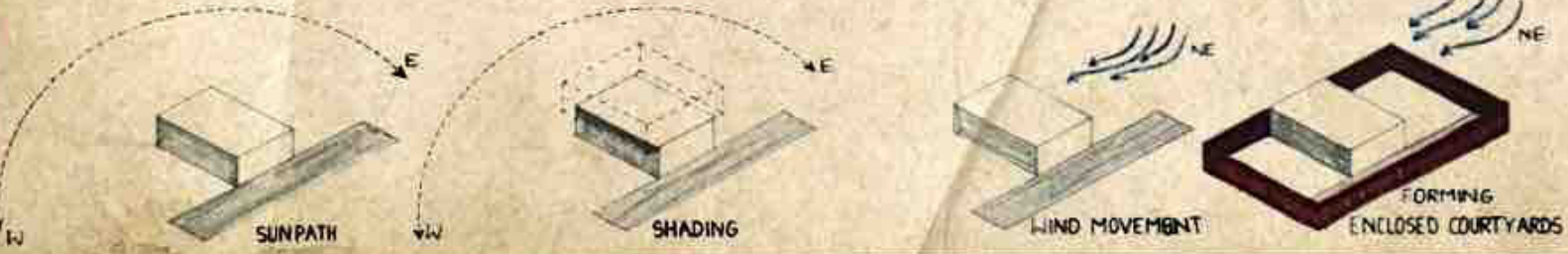
1. CLASSROOM MODULE

2. INTEGRATING LANDSCAPE

3. COMBINING MODULES

4. CREATING INTERACTIVE SPACES

CLIMATE ANALYSIS



SUNPATH

SHADING

WIND MOVEMENT

FORMING ENCLOSED COURTYARDS

FEATURES

CLASSROOM



PROGRAMMING A SINGLE CLASSROOM MODULE WITH CROSS VENTILATION ITS OWN PRIVATE GARDEN AND AN OPEN TO SKY JALLIED COURTYARD BETWEEN TWO CLASSROOMS IS A LARGER GARDEN THAT IS EASILY MONITORED HAS A PERFORMANCE SPACE AND PROVISIONS FOR CONDUCTING CLASSES



SECONDARY SKIN

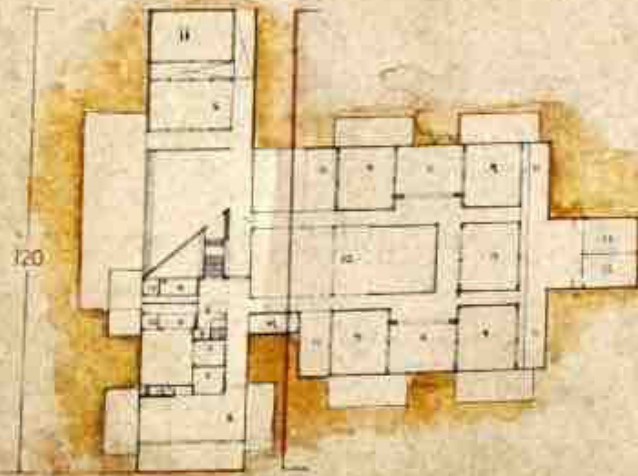
JALLIES IN GROUND FLOOR AND AN AMBITIOUS CREEPER SCREEN IN FIRST FLOORS TO ALLOW NATURAL LIGHT SHIELD DUST AND PROVIDE SECURITY

ENTRY WALKWAY

THE STRUCTURE VISUALLY CREATES A PRESENCE AS ONE WALKS ALONG THE HEAVILY CARRIED MAIN ENTRY WALKWAY



SCALE 1:750
ALL DIMENSIONS ARE IN M



GROUND FLOOR PLAN

CENTRAL COURTYARD

CENTRAL COURTYARD TIES ALL THE SPACES WITHIN EACH MODULE AND IS REPLICATED IN ALL PHASES. THIS CENTRAL STEPPED AND VEGETATED COURTYARD SERVES FOR LARGER GATHERINGS AS A MULTI-PURPOSE SPACE AND FOR CIRCULATION



CENTRAL STAGE:

INTEGRATED WITHIN THE COURTYARD AMONGST THE GREEN POCKETS CREEPERS AND VINES IS A STAGE THAT IS USED BY CREEPERS CHILDREN OR STAFF TO PERFORM

LEGENDS FOR PLAN

GROUND FLOOR

- 1- RECEPTION
- 2- WAITING
- 3- HOD
- 4- DIRECTOR
- 5- PANTRY
- 6- LIBRARY
- 7- MEETING
- 8- STAFF ROOM
- 9- CLASS ROOM
- 10- CENTRAL COURTYARD

- 11- OUTSIDE ACT AREA
 - 12- TOILETS
 - 13- LIFT
 - 14- EB PANEL ROOM
- FIRST FLOOR
- 1- CLASS ROOM
 - 2- PERFORMANCE
 - 3- COMPUTER LAB
 - 4- LAB
 - 5- SERVER ROOM
 - 6- WATER TANK

7- LIFT

- 8- MOTOR ROOM
- SECOND FLOOR
- 1- SEMINAR HALL
- 2- LIFT
- 3- WATER TANK

Section
Elevation



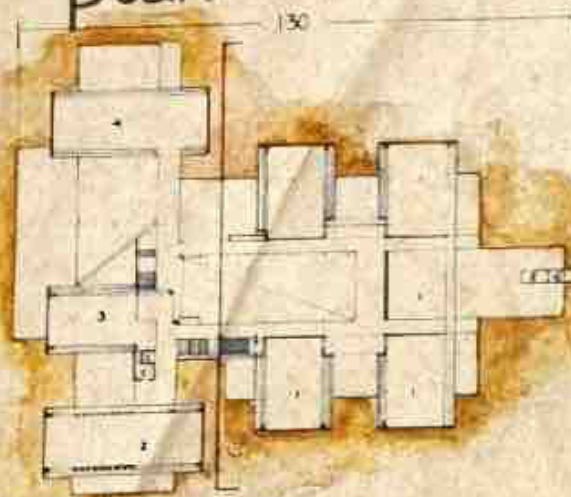
SECTION A-A

SCALE 1:500

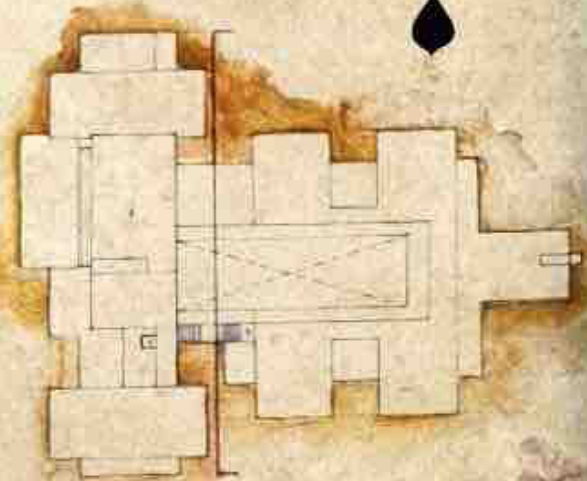


ELEVATION

plan



FIRST FLOOR PLAN



SECOND FLOOR PLAN



SITE DESCRIPTION

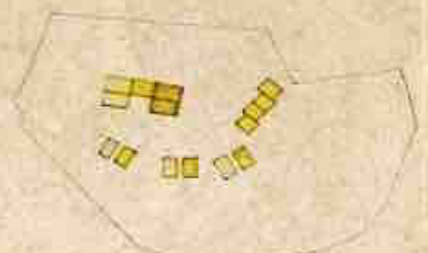
YEAR OF COMPLETION	2018
SITE AREA	11,255 sq. m
BUILTUP AREA	950 sq. m
KINDERGARTEN SITE AREA	2,75 sq. m
KINDERGARTEN BUILTUP AREA	911 sq. m
PLOT ORIENTATION	NORTH FACING
CONNECTING ROADS	2
CLIMATE	MEDITERRANEAN
LATITUDE	41.502594
LONGITUDE	2.080056
TYPE	TOWN

Կաթճորհի իճթոհեր իճհոօե

ԳՅՈՒՆԻԷՐ
DESIGNED BY EDUARD BALCELLS, IGNASI
RUIZ, ARCHITECTURE AND TIGGAS ARCHITECT



RAMBLA / CIVIC AXIS
CIVIC AXIS & BUILDINGS ALONG IT FOLLOW THE
TOPOGRAPHY



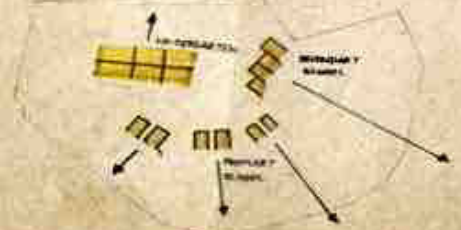
NATURAL LIGHT INTENSITY
DIFFERENT ORIENTATIONS MEANS DIFFERENT
LIGHT INTENSITY



SPATIAL SEQUENCE TO CLASS
RAMBLA / PLAYGROUND / PORCH / RECEIVING
ROOM / CLASSROOM



NATURAL LIGHT COLOR
DIFFERENT ORIENTATIONS MEANS DIFFERENT
LIGHT COLOR

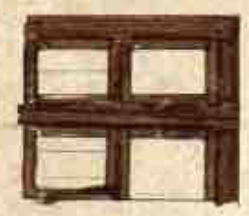


HORIZONS
HORIZON (DEPTH OF VIEWS) EXPANDS WITH AGE



SCHOOL COMPLEX LAYOUT ALONG THE
PATH OF KNOWLEDGE, FOLLOWING TOPOGRAPHY

CONSTRUCTION

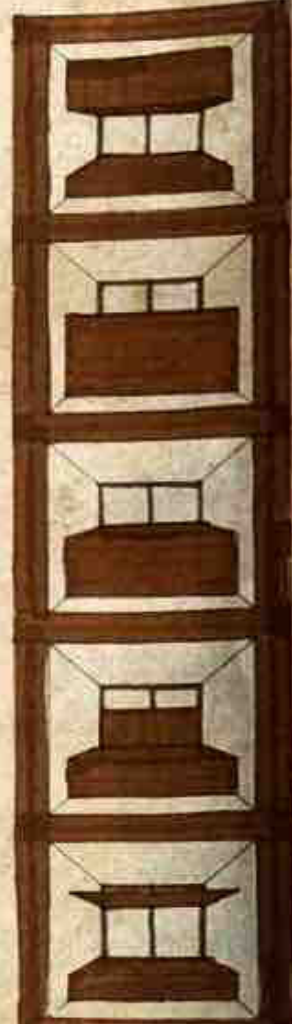
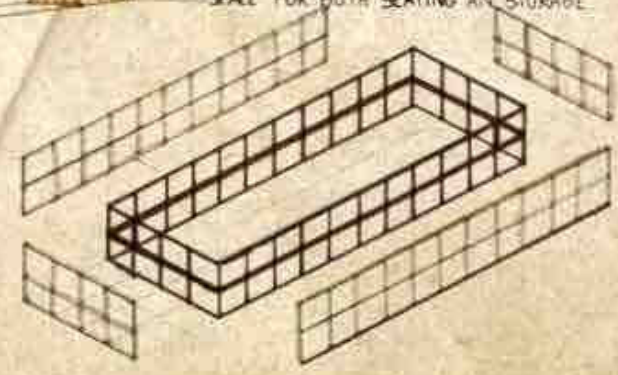


THESE PANELS HAVE BEEN ARRANGED SO
THE PINE SLATS ARE EITHER HORIZONTAL
OR VERTICAL CREATING AN INTERESTING
PATTERN ON THE FACADE

EXTERNALLY, THIS WOOD HAS BEEN
TEMPERATURE-TREATED AND OVER TIME
WILL TURN SILVERY GREY IN COLOR

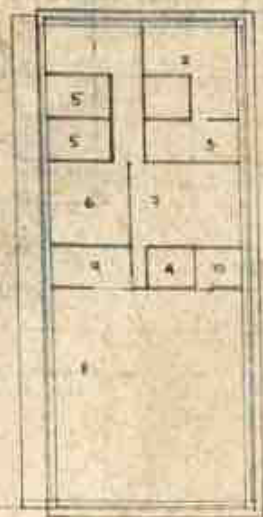


INTERNALLY, THE KINDERGARTEN'S CONCRETE
STRUCTURAL HAS BEEN LEFT EXPOSED AND
DEEP WOODEN WINDOW REVEALS PROVIDE
SPACE FOR BOTH SEATING AND STORAGE



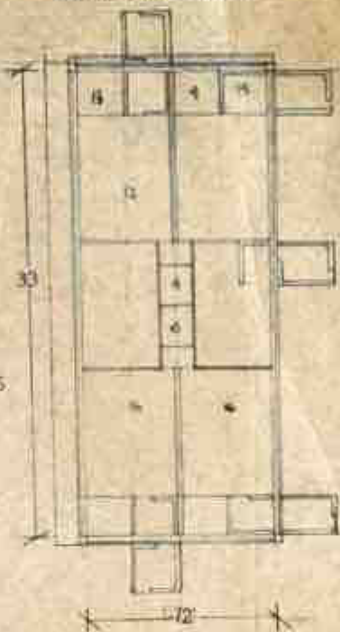
common spaces & kindergarten

GROUND FLOOR PLAN/
COMMON SPACE



- 1. RECEPTION
- 2. ADMINISTRATION
- 3. MANAGEMENT
- 4. BATHROOM
- 5. OFFICES
- 6. TEACHER'S ROOM
- 7. SUPPORT CLASS ROOM
- 8. RHYTHMICS HALL
- 9. BACK ROOM
- 10. STORAGE
- 11. GARDEN SLOPE
- 12. KINDERGARTEN CLASS
- 13. OFFICE
- 14. VESTIBULE
- 15. PORCH
- 16. CLASSROOM (2-3)

FIRST FLOOR PLAN

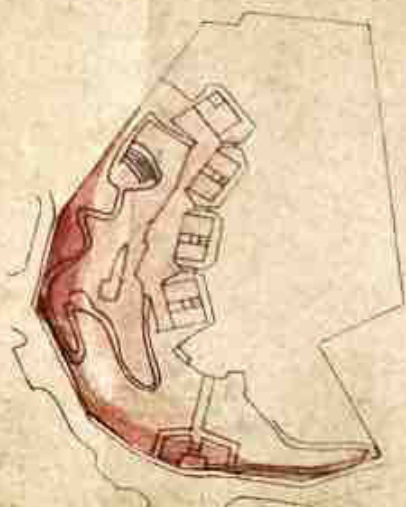
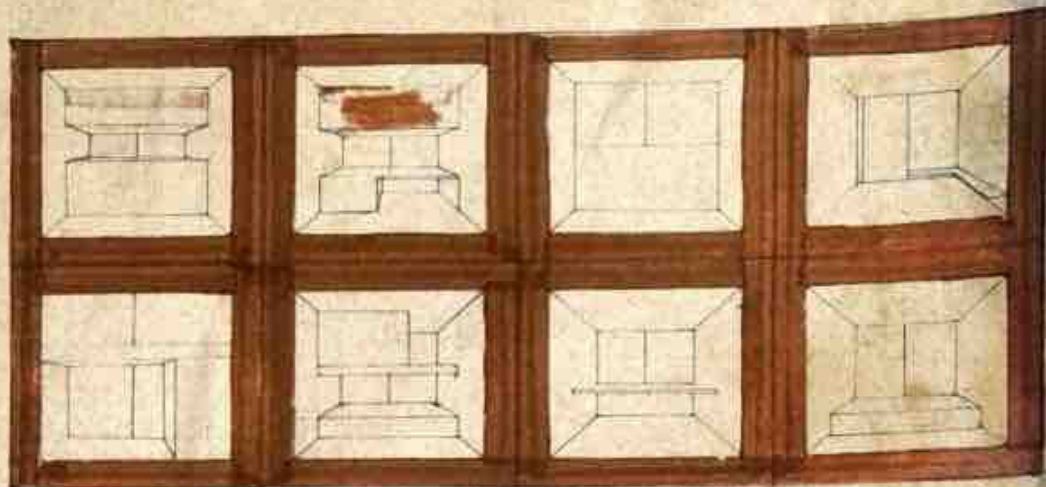


SCALE 1:200
ALL DIMENSIONS ARE IN M

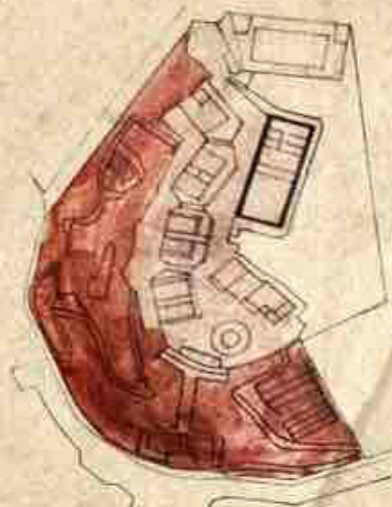
SECTION



SCALE 1:1000



LOWER LEVEL



INTERMEDIATE LEVEL














UPPER LEVEL



OVERALL LEVEL

comparative analysis

ANALYSIS	THE NORTHSTAR SCHOOL - NATIONAL	WALDORF STEINER SCHOOL INTERNATIONAL	INERERENCE
INTRODUCTION CAPACITY	 LOCATION RAJKOT, GUJARAT CAPACITY: K-12 SCHOOL APPROX. 1200 STUDENTS	 LOCATION BELLATERRA NEAR BARCELONA, SPAIN CAPACITY ~350-500 STUDENTS DIVIDED BY AGE GROUPS	NORTHSTAR IS DESIGNED FOR LARGE-SCALE, FULL-CAPACITY EDUCATION, WHILE EL TIL-LER EMPHASIZES INTIMATE SMALL COMMUNITY LEARNING ALIGNED WITH WALDORF PHILOSOPHY
CLIMATE ORIENTATION	HOT DRY SEMI-ARID 	MEDITERRANEAN MILD 	BOTH ADAPT TO CLIMATE NORTHSTAR PRIORITIZES HEAT REDUCTION EL TIL-LER CELEBRATES OUTDOOR SEASONAL MOVEMENT
MASSING ZONING	STACKED AND OVERLAPPING BLOCKS ACADEMIC BLOCKS AROUND CENTRAL COURTYARD WITH PLAY AND SERVICES ALONG EDGES	SMALL, LOW-RISE TIMBER-CLAD ADDITIONS + REUSED OLDER HOUSE ORGANIZED ALONG A LINEAR RAMBLA SPINE -> CLASSROOMS, PLAZAS, COMMUNAL SPACES	NORTHSTAR'S ZONING IS INTROVERTED AND COMPACT EL TIL-LER'S IS EXTROVERTED AND LINEAR
CONTOURS	FLAT SITE LANDSCAPE SHAPED INTO STEPPED CENTRAL COURTYARD	GENTLY SLOPING GARDEN SITE  NEW CLASSROOMS FOLLOWS	NORTHSTAR'S CREATE CONTOUR ARTIFICIALLY FOR SPICAL DRAMA, WHILE EL TIL-LER RESPECTS EXISTING TOPOGRAPHY FOR NATURAL INTEGRATION
ACADEMIC BLOCK	ACADEMIC BLOCKS SURROUND THE COURTYARD 	DISTRIBUTED ACADEMIC UNITS ALONG THE RAMBLA 	NORTHSTAR'S ACADEMIES ARE CENTRALIZED, WHILE EL TIL-LER'S ARE DISTRIBUTED, FOSTERING GRADUAL INDEPENDENCE WITH AGE
GATHERING SPACE	CENTRAL COURTYARD 	PLAZA AT THE END OF RAMBLA 	GATHERING IN NORTHSTAR IS CENTRALISED AND FORMAL, WHILE IN EL TIL-LER IT IS DIFFUSED AND LANDSCAPE-BASED

CIRCULATION	COURTYARD BASED INTERNAL NO INDOOR CORRIDORS CIRCULATION	VARANDAS SHAPES TERRACES CIRCULATIONS ARE VIA RAMBLA DOUBLE AS LEARNING SPACES PORCHES	NORTHSTAR TREATS CIRCULATION AS SHELTERED COMMUNAL SPACE EL TIL-LER AS OPEN-AIR CONCEPT EXPERIENTIAL JOURNEY
CLASSROOM	LARGE WINDOWS SHADED VARANDAS	TIMBER CLASSROOMS WITH WARM FINISHES -ROTATED ORIENTATIONS FOR CHANGING DAYLIGHT	NORTHSTAR CLASSROOMS EMPHASIZE FUNCTIONALITY & FLEXIBILITY EL TIL-LER EMPHASIZES SENSORY AND EMOTIONAL EXPERIENCE
AUDITORIUM	MULTI-USE HALL	PLAZA, + /	NORTHSTAR PREFERRED DEDICATED INDOOR LARGE GATHERINGS EL TIL-LER PREFERRED OUTDOOR COLLECTIVE EXPERIENCES
LAB	DEDICATED SCIENCE AND COMPUTER LABS IN ACADEMIC BLOCK	SMALL, INTEGRATED WORKS SHOPS/ CRAFTSPACES (ALIGNED TO WALDORF PEDAGOGY)	NORTHSTAR - MODERN SCIENCES EL TIL-LER - ARTS, CRAFTS AND SENSORY LEARNING
LIBRARY	OPEN READING AREA INTEGRATED INTO MAIN ACADEMIC CLUSTER	LOCATED IN ONE OF THE REUSED BUILDINGS, SMALL SCALE, HOMELY FEEL	NORTHSTAR POSITIONING LIBRARY AS A CENTRAL ACADEMIC HUB EL TIL-LER AS A COZY RETREAT SUPPORTING INTIMATE WALDORF PEDAGOGY
NATURAL LIGHT & VENTILATION	COURTYARD CROSS-VENTILATION MUTUAL SHADING  INDIRECT LIGHT TO REDUCE GLARE/HEAT	CLASSROOMS USE VARIED DAYLIGHT (SOFT VS INTENSE) FOR SENSORY LEARNING  VENTILATION VIA PORCHES AND OPEN COURTYARDS	NORTHSTAR FOCUSES ON COOLING AND GLARE CONTROL EL TIL-LER USES LIGHT FOR PEDAGOGICAL AND SENSORY RICHNESS
PARKING	ORGANISED PARKING ZONES NEAR SITE ENTRANCE AWAY FROM LEARNING AREAS	MINIMAL PARKING, SMALL ENTRY ZONE (SCHOOL PRIORITIZES PEDESTRIAN AND GARDEN CIRCULATION)	NORTHSTAR ANTICIPATES CAR-CENTRIC INDIAN CONTEXT, EL TIL-LER PROMOTES ECO-FRIENDLY, WALKABLE CAMPUS

gujarat

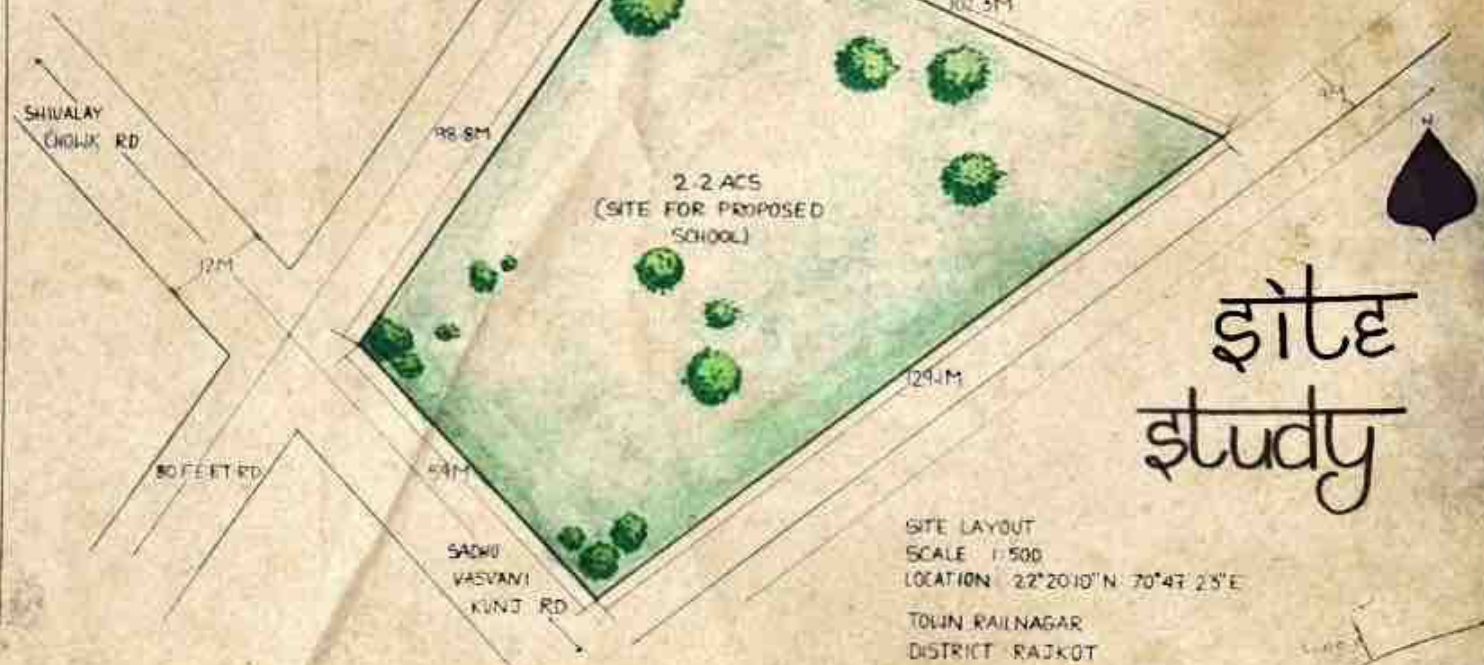
EASY TO REACH - 4 MAIN ROADS
2 MAIN JUNCTIONS
ENOUGH LAND - 2.2 AC
GROUND CONDITION - FLAT
SAFE SURROUNDING - NO FACTORIES
NO HIGHWAYS
BASIC FACILITIES - WATER
ELECTRICITY
DRAINAGE
CLIMATE DATA - HOT SEMI ARID CLIMATE
- SUMMER - MARCH TO MID JUNE (HOT AND DRY)
- MONSOON - MID JUNE TO OCTOBER (ANNUAL RAINFALL)
(SOUTHWEST MONSOON - 670MM)
- WINTER - DECEMBER TO FEBRUARY (30°C)
AVERAGE TEMP - 32.5°C MIN - 19°C
WIND - SOUTHWEST
NATURAL COMFORT - GOOD SUN IN WINTER
BREEZES IN MONSOON
FLAT SITE

AUTHORITY FOR APPROVAL
- GUJARAT DEVELOPMENT CONTROL REGULATIONS (GDCR)
- URBAN DEVELOPMENT DEPT
- COMPREHENSIVE GENERAL DEVELOPMENT CONTROL
REGULATIONS - 2019 (GOVERNMENT OF GUJARAT)

SETBACKS - FRONT SETBACK - 6.5M
SIDE SETBACK - 5.0M
REAR SETBACK - 5.0M

FSI - 1.8

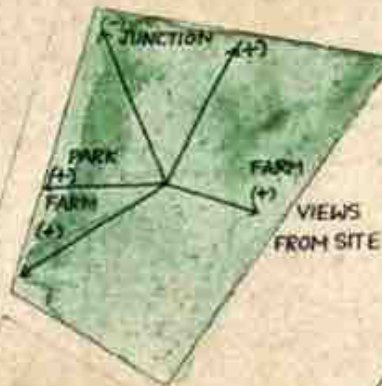
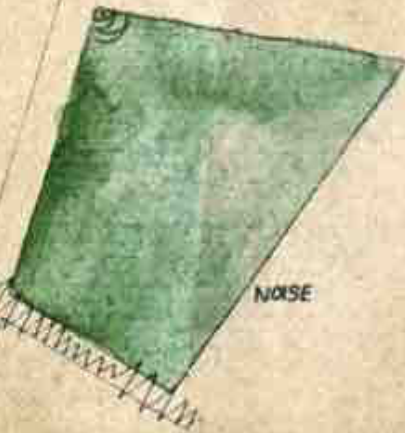
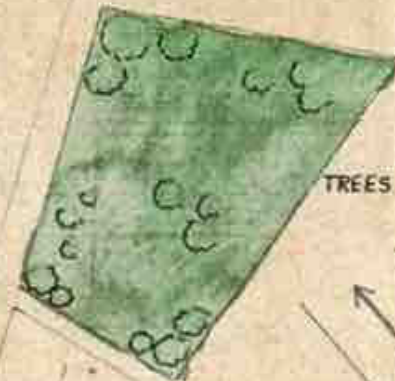
FSI = 1.8



Site study

SITE LAYOUT
SCALE 1:500
LOCATION 22°20'10\"N 70°47'25\"E
TOWN RAINAGAR
DISTRICT RAJKOT

site analysis



HS

STRENGTHS - GROWING CITY WITH DEMAND OF QUALITY EDUCATION
- FLAT LAND

B

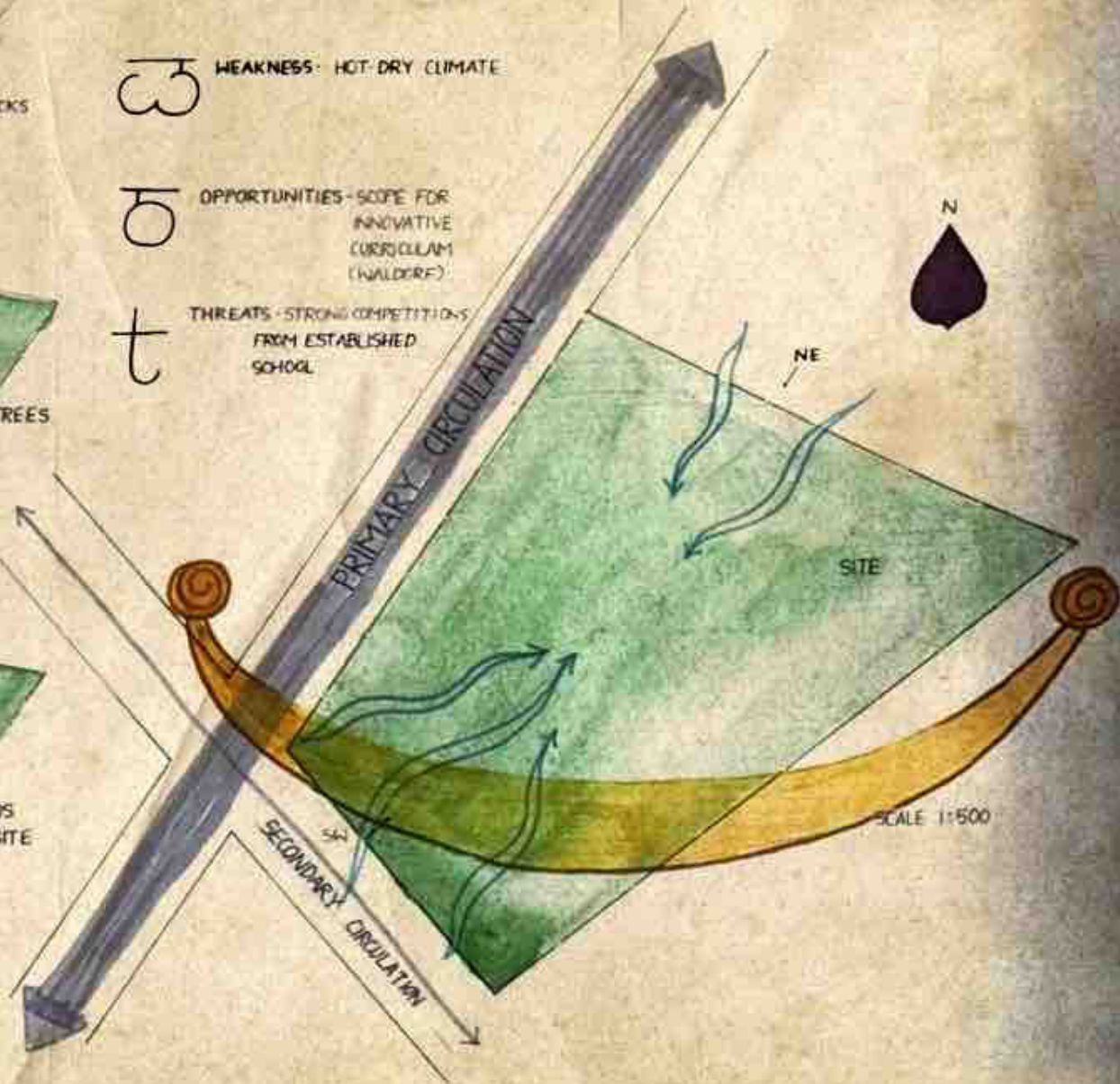
WEAKNESS: HOT DRY CLIMATE

O

OPPORTUNITIES - SCOPE FOR INNOVATIVE CURRICULUM (WALDORF)

T

THREATS - STRONG COMPETITIONS FROM ESTABLISHED SCHOOL



history

GARBA IS A TRADITIONAL DANCE FROM GUJARAT, KNOWN FOR ITS VIBRANT, CIRCULAR MOVEMENTS AND DEEP SPIRITUAL ROOTS, PRIMARILY PERFORMED DURING THE HINDU FESTIVAL OF NAVRATRI AND THE WORSHIP OF THE GODDESS DURGA AND THE DIVINE FEMININE ENERGY.

ORIGINS AND ETYMOLOGY
 • GARBA → GARBHA (SANSKRIT) → WOMB, SYMBOLIZING FERTILITY, LIFE
 • GARBA IS PERFORMED AROUND A CLAY LANTERN CALLED 'GARBHA DEEP' (WOMB LAMP), PLACED AT THE CENTER OF A CIRCLE TO SYMBOLIZE BOTH GODDESS AND THE IDEA OF LIFE DWELLING WITHIN THE WOMB.

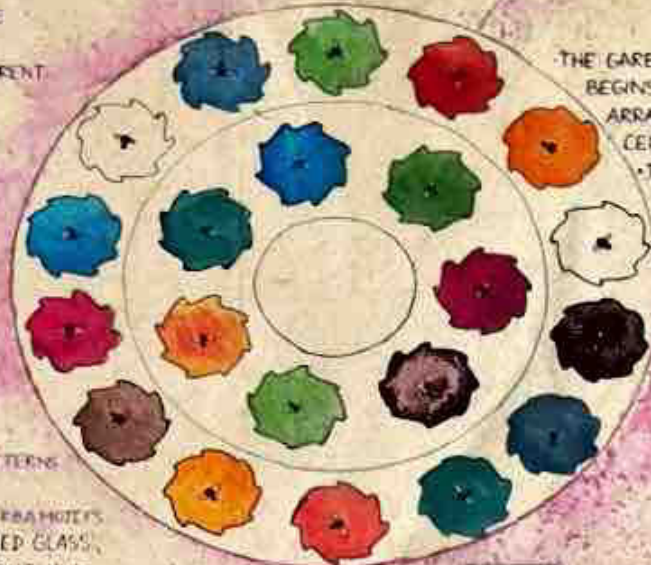
SPIRITUAL AND CULTURAL SIGNIFICANCE
 • CIRCULAR FORMATION → CYCLICAL NATURE OF TIME IN HINDU PHILOSOPHY - BIRTH, LIFE, DEATH, AND REBIRTH - WITH THE DIVINE FEMINE AS THE UNCHANGING CENTER.
 • IT FOSTERS COMMUNITY UNITY BY BRINGING TOGETHER DIFFERENT SOCIAL, ECONOMIC, AND GENDER BACKGROUNDS, BUILDING INCLUSIVITY AND COLLECTIVE CELEBRATION.

HISTORICAL AND MYTHOLOGICAL CONTEXT
 • THE DANCE IS CLOSELY TIED TO THE MYTH OF GODDESS DURGA'S VICTORY OVER THE DEMON MAHISASURA, SYMBOLIZING THE TRIUMPH OF GOOD OVER EVIL AND MARKING THE END OF NINE NIGHTS OF STRUGGLE.

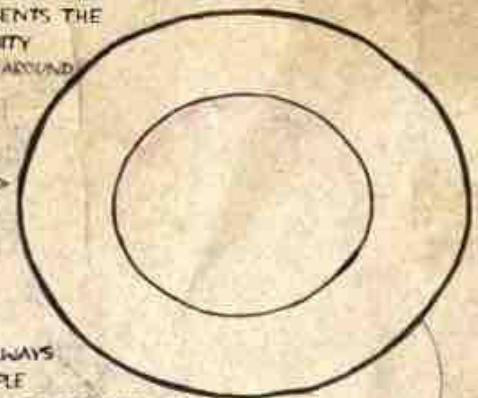
concept

garba

ananta chakra
infinite circle

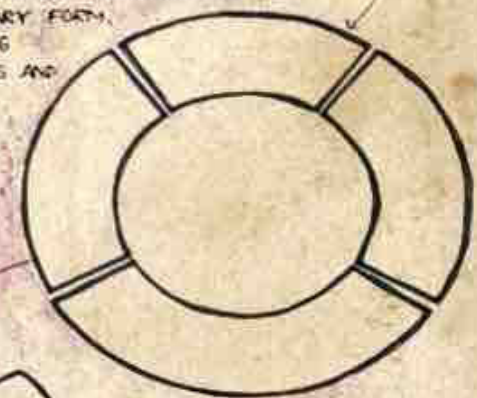


CIRCLE
 • A SMALLER INNER CIRCLE SYMBOLIZES THE CORE LEARNING SPACE OR GATHERING SPACE, WHILE THE OUTER RING REPRESENTS THE COMMUNITY MOVING AROUND IT.

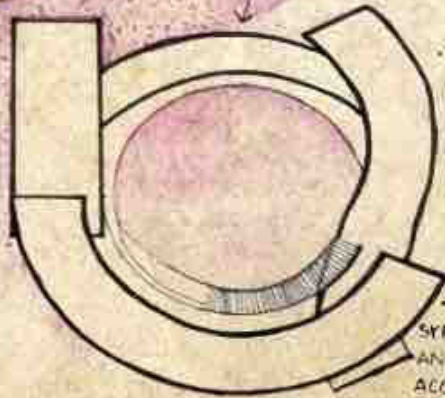


THE GARBA DANCE ALWAYS BEGINS WITH PEOPLE ARRANGED IN CONCENTRIC CIRCLES AROUND A CENTRAL SPACE.

THIS INSPIRED THE USE OF THE CIRCLE AS THE PRIMARY FORM, REPRESENTING INCLUSIVENESS AND CONTINUITY.



THE OUTER CIRCLE IS DIVIDED INTO SEGMENTS JUST LIKE DANCERS IN THE GARBA ARRANGE THEMSELVES IN RHYTHMIC PATTERNS.
 THESE SEGMENTS EVOLVE INTO FUNCTIONAL BLOCKS OF THE SCHOOL, WITH CIRCULATION PATHS ENHANCING THE FLOW OF MOVEMENT.



THE EVOLVED FORM REFLECTS BOTH THE SYMBOLISM OF GARBA (UNITY, RHYTHM, CELEBRATION) AND THE PRACTICAL NEEDS OF A SCHOOL (ZONING, ACCESSIBILITY, INTERACTION, SPACES).

features



GATEWAY ARCH
 THE ARCHE FACES SOUTH-WEST, TOWARDS THE ARABIAN SEA. THE DIRECTION BRINGS IN SEA BREEZES THAT ARE NATURALLY COOLER AND MORE HUMID COMPARED TO THE HOT INLAND WINDS, ESPECIALLY DURING THE MONSOON.

VERTICAL SUNSHADE



FRETWORK PATTERNS INSPIRED BY TRADITIONAL GARBA MOTIFS, MULTI-COLOURED GLASS, TO CAST VIBRANT SHIES.

OPEN CORRIDORS

OPEN CORRIDORS WITH TREE VIEWS SHOULD BE DESIGNED TO MAXIMIZE COMFORT, SHADE, WHILE MAINTAINING CONNECTIVITY WITH OUTDOOR GREEN SPACES.

WATER FOUNTAINS

THROUGH EVAPORATION, COOLING IT LOWERS LOCAL TEMPERATURES, ADDS HUMIDITY, AND REFRESHES THE AIR IN SHADED COURTYARDS.



STEPWELL INSPIRED SEATING

VAWS, FORMING A SOCIAL HUB ENCOURAGING STUDENT INTERACTION IN INFORMAL SETTINGS.

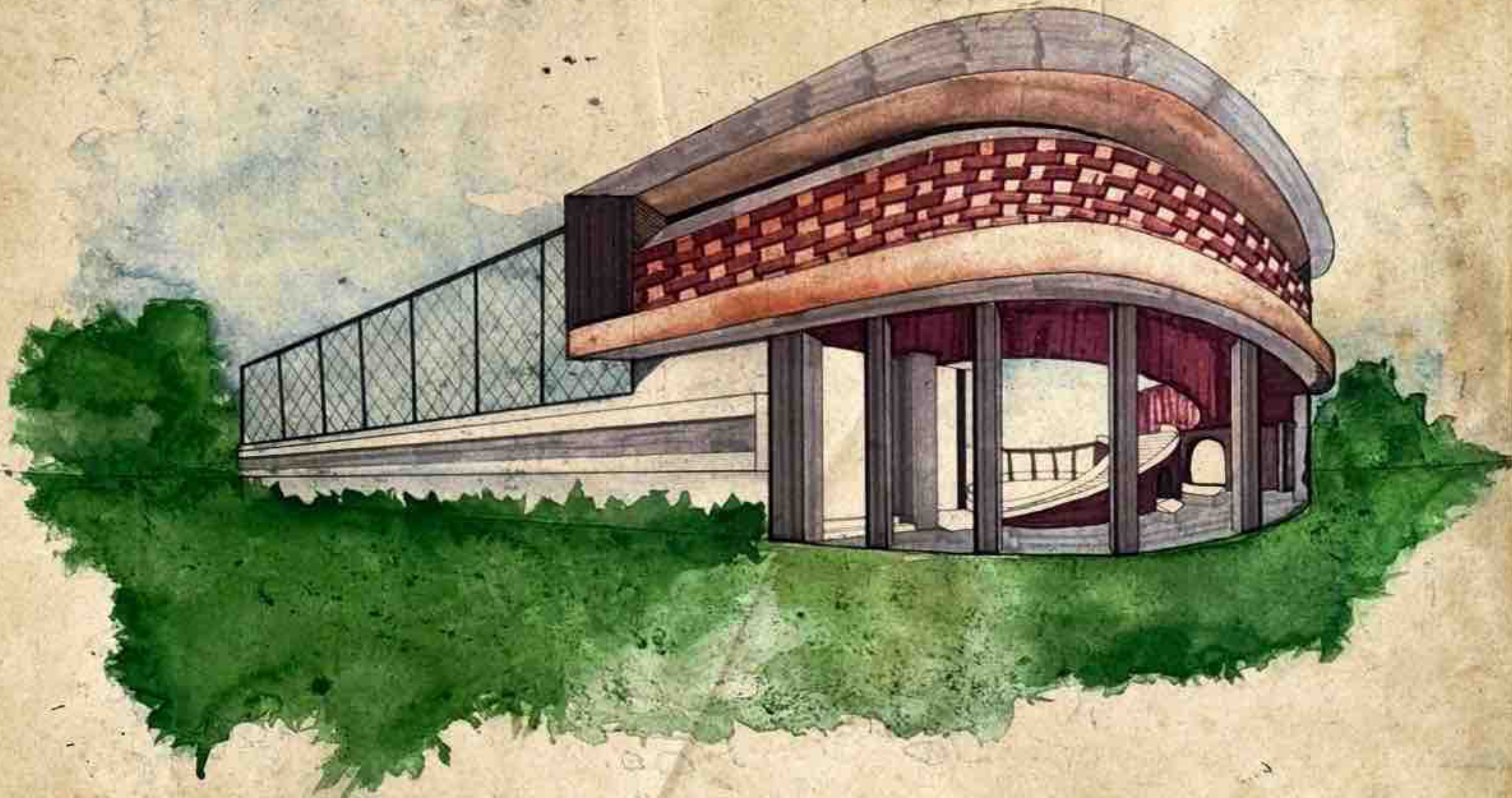


COLOURFUL REFLECTIVE PAVILIONS

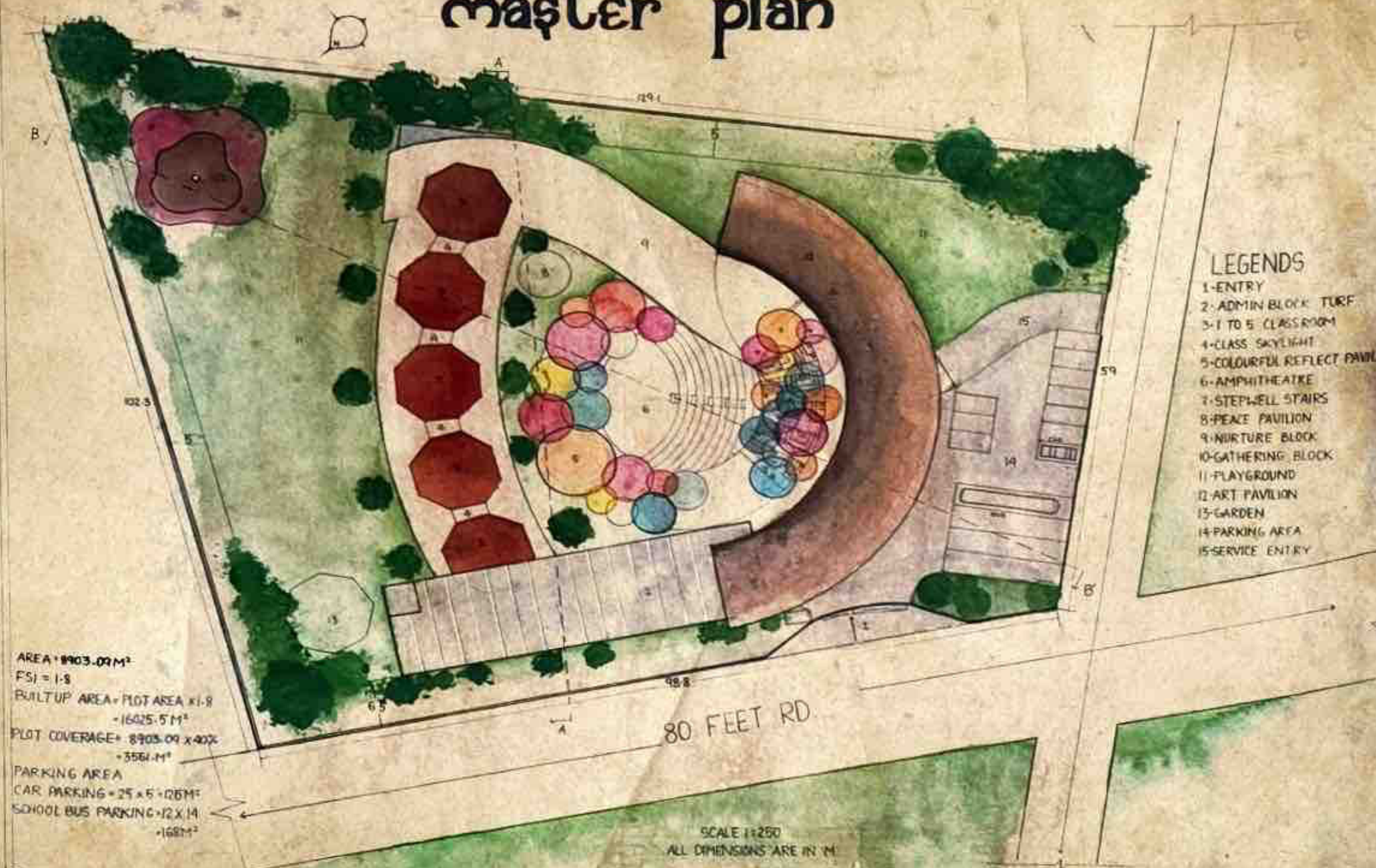
INSPIRED BY THE TWIRLING SKIRTS OF GARBA DANCERS, THE PAVILION USES COLOURED GLASS, WATER RUNS DOWN THE PANELS INTO A CENTER KISS DRAIN.



ananta chakra



master plan

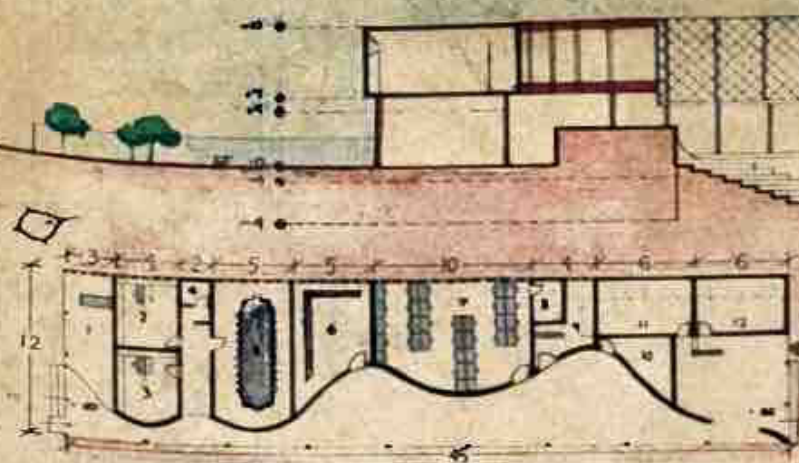


- ### LEGENDS
- 1-ENTRY
 - 2-ADMIN BLOCK TURF
 - 3-1 TO 5 CLASSROOM
 - 4-CLASS SKYLIGHT
 - 5-COLOURFUL REFLECT PAVILION
 - 6-AMPHITHEATRE
 - 7-STEPWELL STAIRS
 - 8-PEACE PAVILION
 - 9-NURTURE BLOCK
 - 10-GATHERING BLOCK
 - 11-PLAYGROUND
 - 12-ART PAVILION
 - 13-GARDEN
 - 14-PARKING AREA
 - 15-SERVICE ENTRY

AREA = 8903.09 M²
 FSI = 1.8
 BUILTUP AREA = PLOT AREA x 1.8
 = 16025.5 M²
 PLOT COVERAGE = 8903.09 x 40%
 = 3561.24 M²
 PARKING AREA
 CAR PARKING = 25 x 5 = 125 M²
 SCHOOL BUS PARKING = 12 x 14
 = 168 M²

80 FEET RD.

SCALE 1:250
 ALL DIMENSIONS ARE IN 'M'



ADMIN BLOCK PLAN



PERSPECTIVE VIEW OF ADMIN BLOCK

LEGENDS

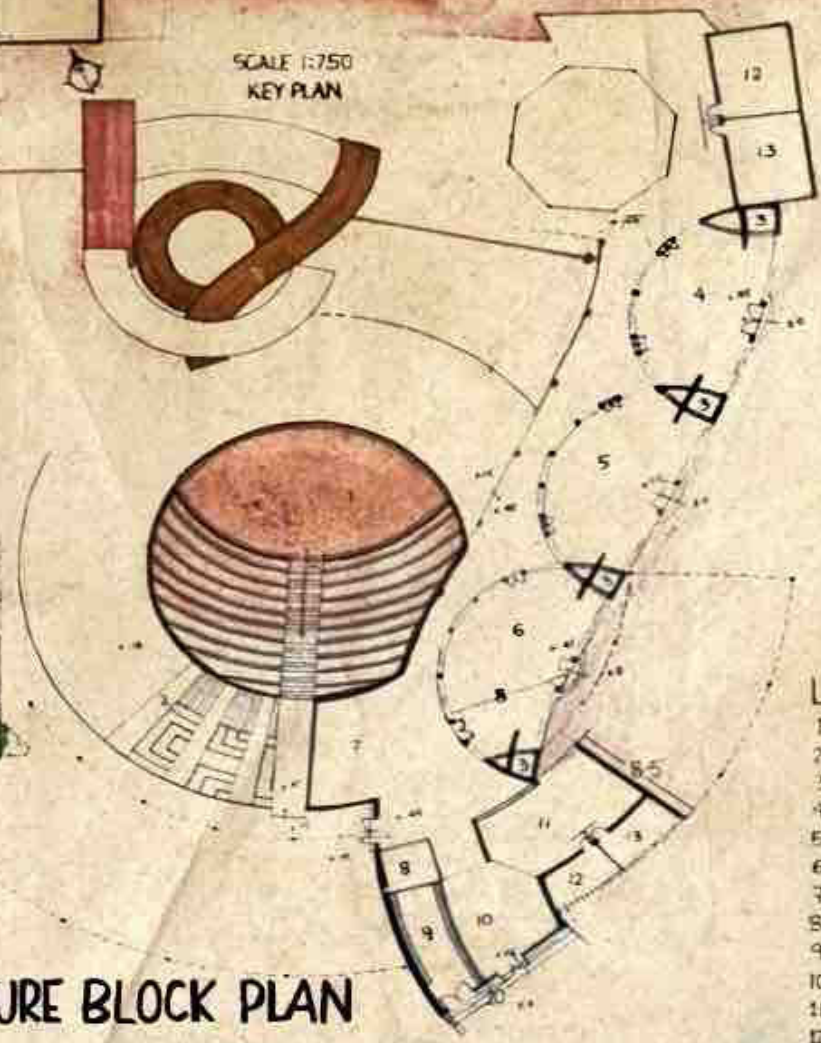
- 1-RECEIVING AREA
- 2-PRINCIPAL OFFICE
- 3-DIRECTOR'S OFFICE
- 4-TOILET
- 5-CONFERENCE HALL
- 6-ACCOUNTING
- 7-TEACHER'S ROOM
- 8-STORE ROOM
- 9-INFIRMARY
- 10-COUNSELLING ROOM
- 11-LADIES TOILET
- 12-GENTS TOILET

SCALE 1:200
ALL DIMENSIONS ARE IN M

WEST ELEVATION



SCALE 1:750
KEY PLAN

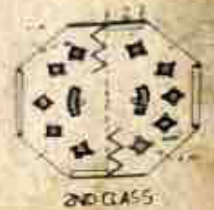


NURTURE BLOCK PLAN

SITE SECTION B-B'



1st CLASS

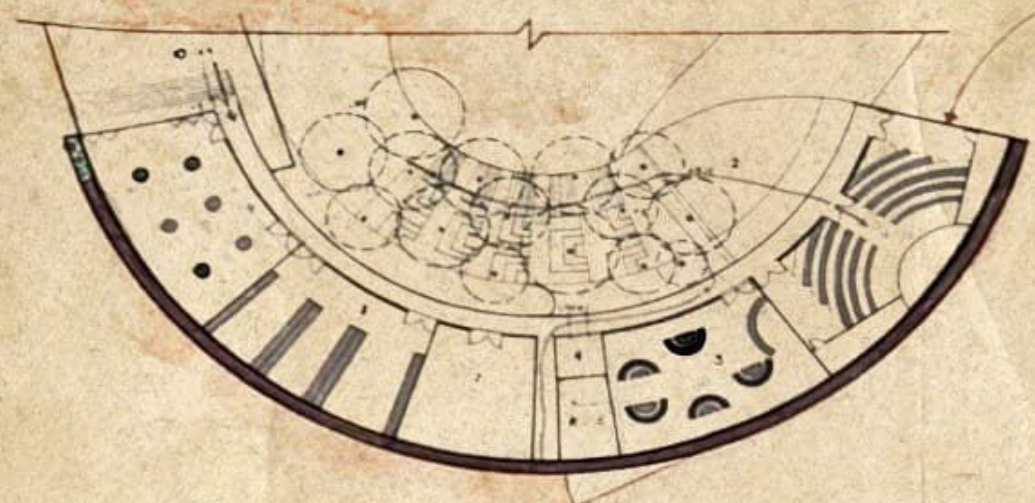


2nd CLASS

LEGENDS

- 1-AMPHITHEATRE
- 2-STEPWELL SEATING
- 3-KIDS WASHROOM
- 4-U-KG
- 5-L-KG
- 6-PRE-KG
- 7-WAITING ROOM
- 8-LIFT
- 9-MESS
- 10-CANTEEN
- 11-COOKING CLASS
- 12-LADIES TOILET
- 13-GENTS TOILET

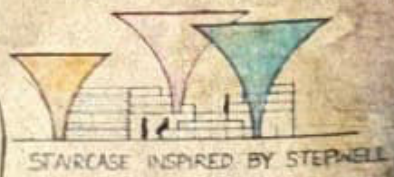
SITE SECTION



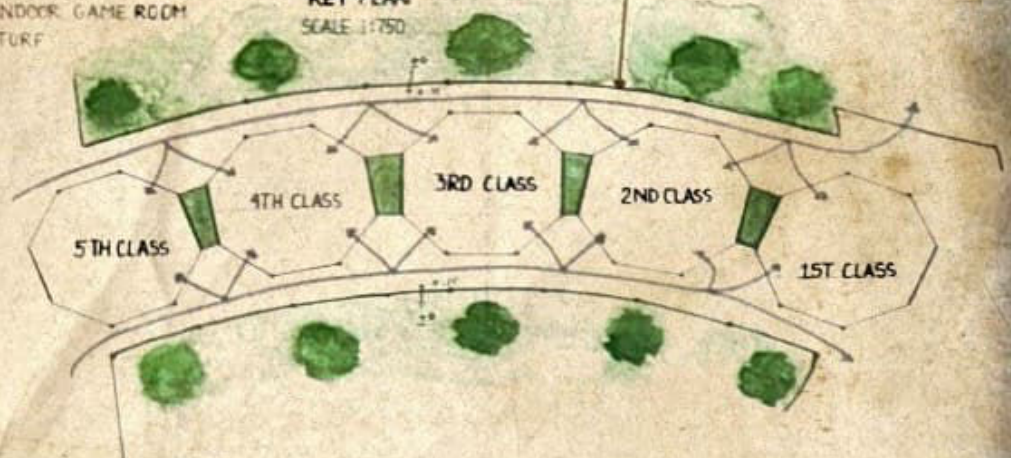
- LEGENDS**
- 1-MULTI PURPOSE HALL
 - 2-
 - 3-LIBRARY
 - 4-LIFT
 - 5-FEMALE TOILET
 - 6-MALE TOILET
 - 7-CRAFT ROOM
 - 8-BASIC EXPERIMENT LAB
 - 9-INDOOR GAME ROOM
 - 10-TURF



KEY PLAN
SCALE 1:750



STAIRCASE INSPIRED BY STEPWELL



PRIMARY BLOCK CIRCULATION

SCALE 1:200
ALL DIMENSIONS ARE IN M

FIRST FLOOR PLAN

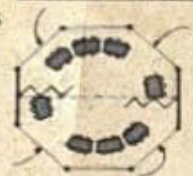
(FIG.1) FOLDING DOOR ACTS AS A TEMPORARY PARTITION WALL BETWEEN TWO CLASS



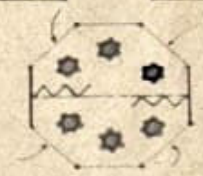
FIG(1)

(FIG.2) FOLDING DOOR WHEN CLOSED, ACTS AS THE BLACK BOARD WHICH CAN BE USED FOR TEACHING AND FOR TEACHING AND KIDS DRAWING BOARD

FIG(2)



3RD CLASS



4TH CLASS

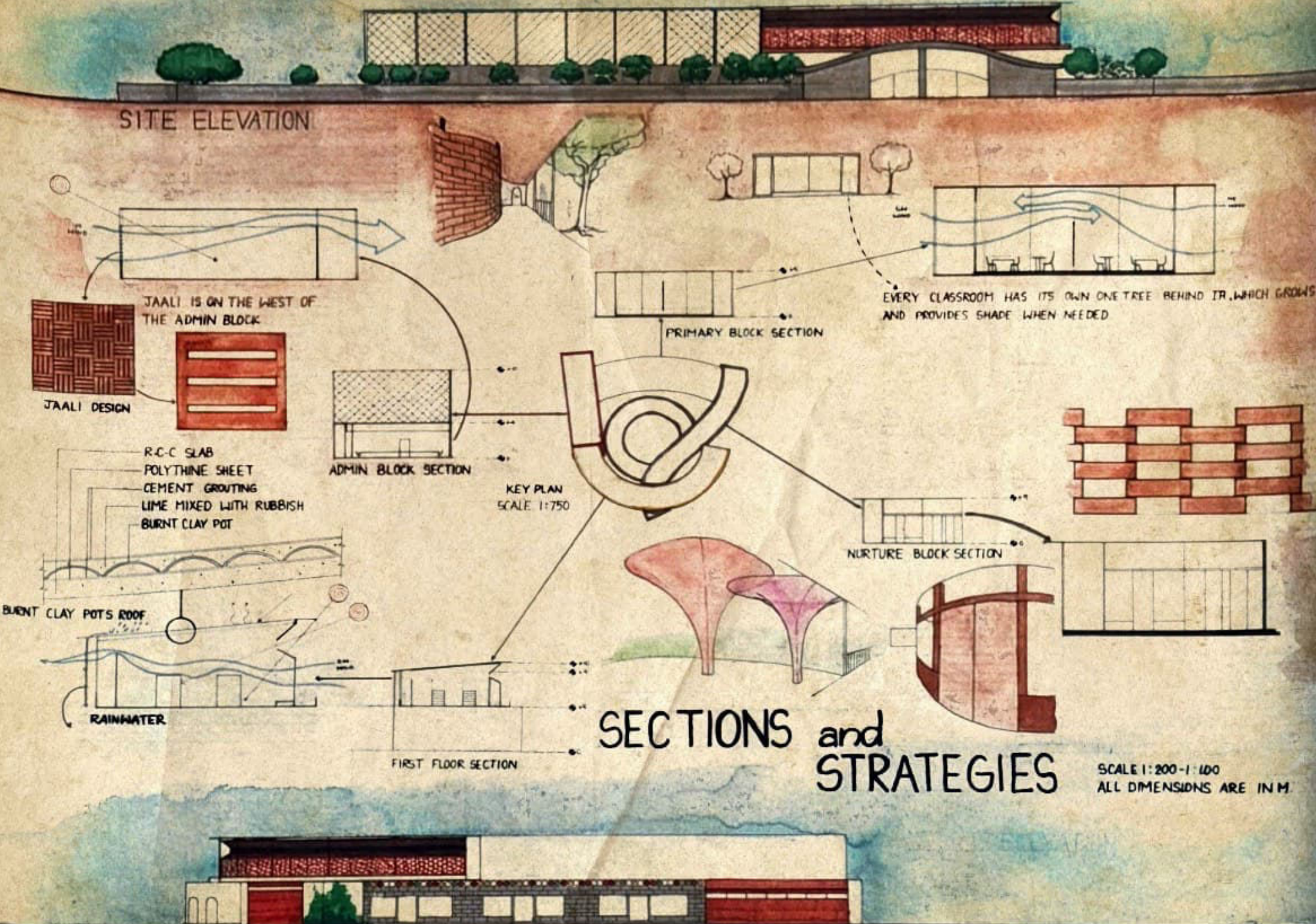


5TH CLASS

SITE ELEVATION

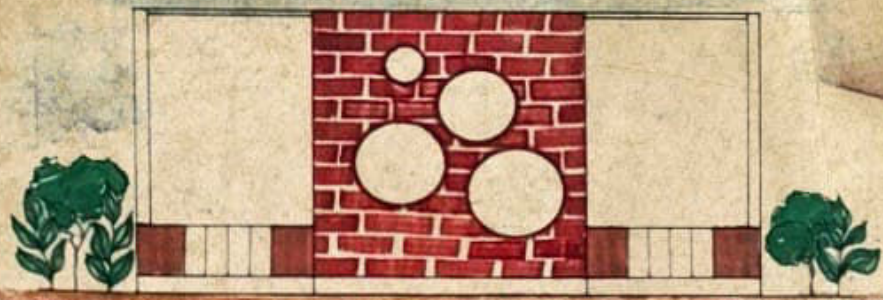


SITE ELEVATION

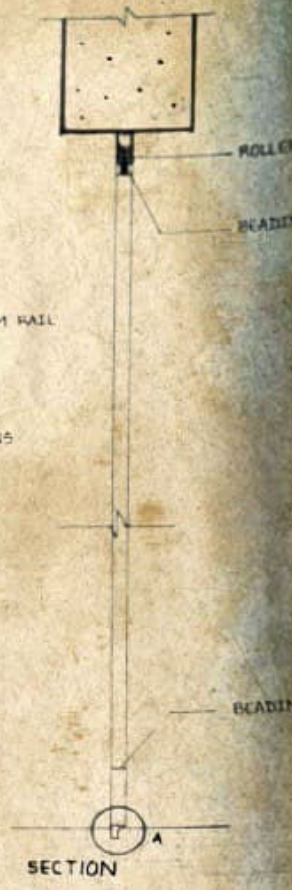
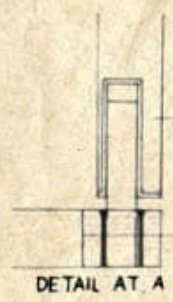


SECTIONS and STRATEGIES

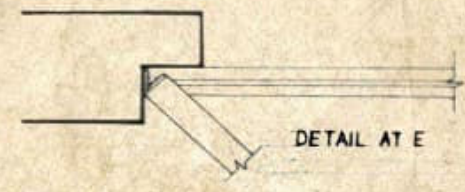
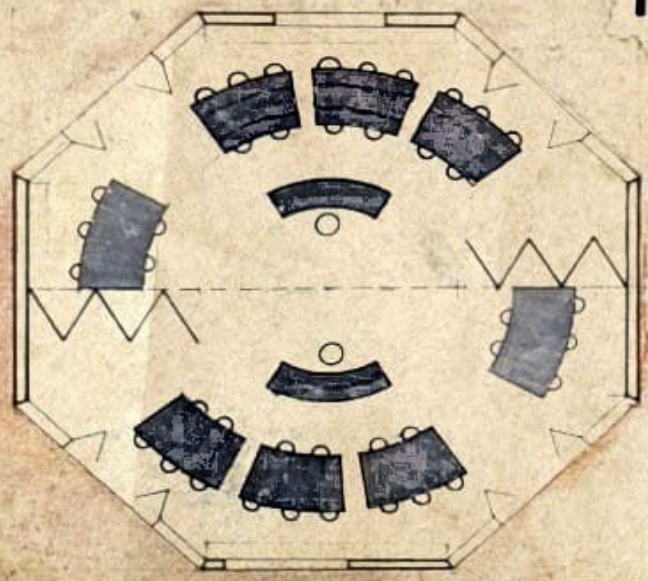
EAST ELEVATION



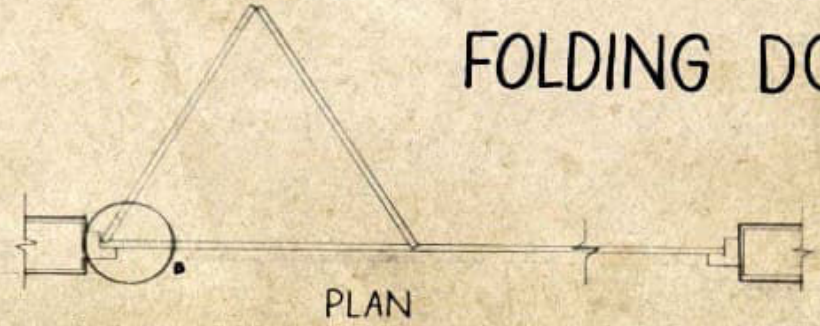
JOINARY



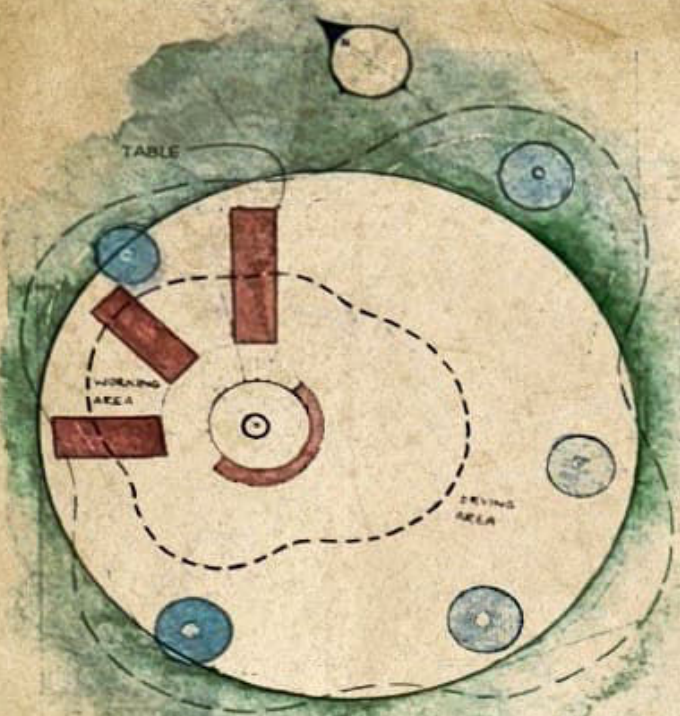
INTERIOR



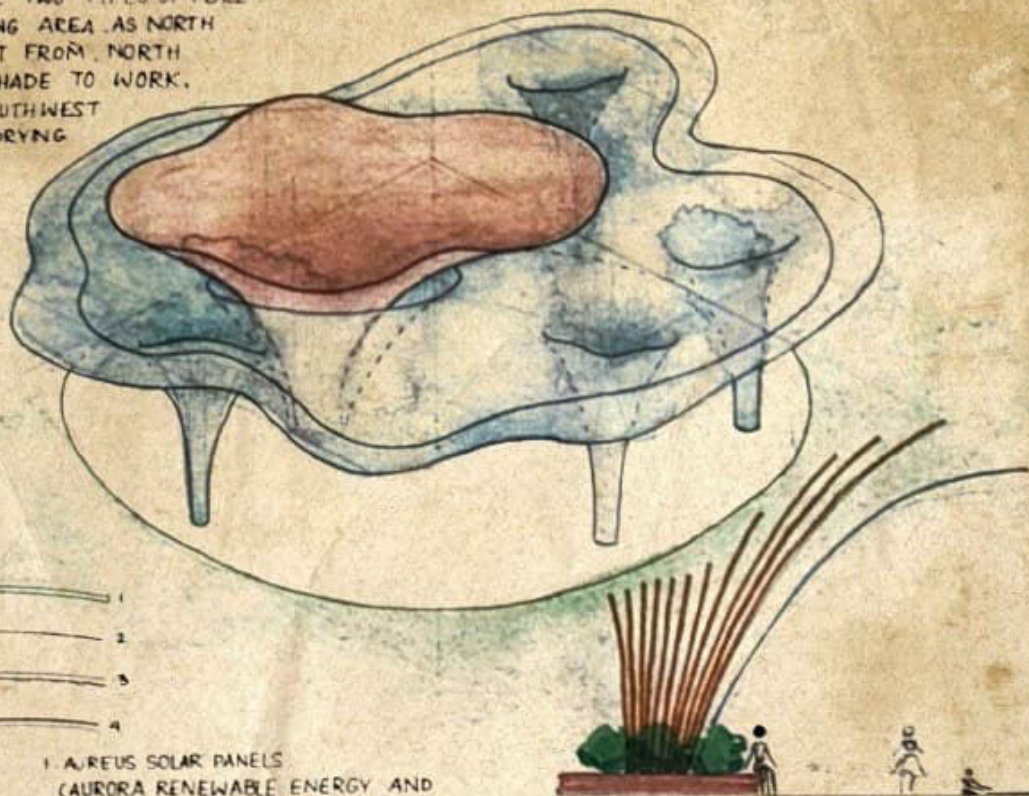
FOLDING DOOR



IN THE PLAN, THERE ARE TWO TYPES OF PLACE -
 WORKING AREA AND DRYING AREA AS NORTH
 HAS THE DIFFUSED LIGHT FROM NORTH
 SIDE WILL I HAVE THE SHADE TO WORK,
 AS EAST, SOUTH AND SOUTHWEST
 ARE DRYING AREA FOR DRYING
 THE LARGE ARTWORK.

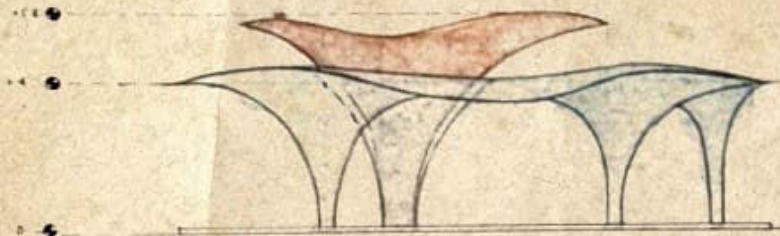


PLAN

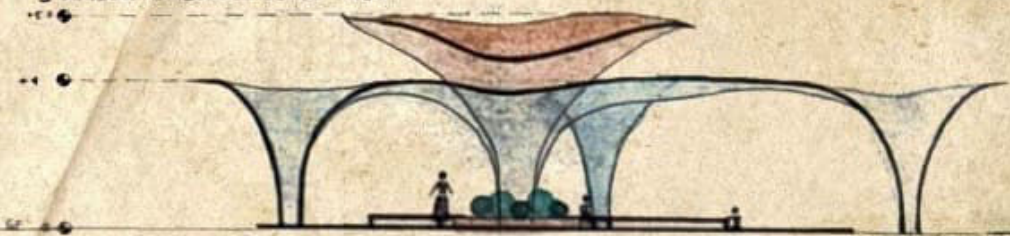


MATERIAL

- 1. AUREUS SOLAR PANELS
(AURORA RENEWABLE ENERGY AND
UV SEQUESTRATION)
- 2. COTTON CLOTH
- 3. ALUMINUM PURLINS
- 4. FIBER EMBOSSED GLASS SHEET



ELEVATION



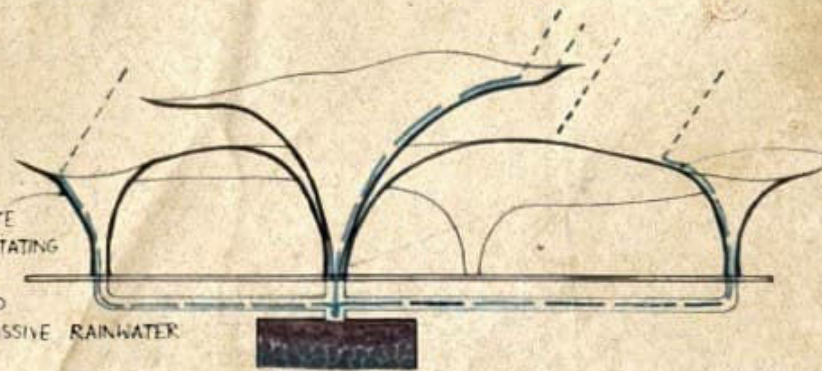
SECTION AA'

mata ni pachedi CONCEPT



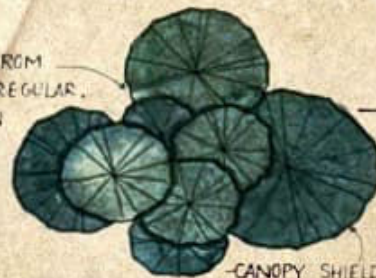
LEAVES THAT HARVEST SUNLIGHT AND PROVIDE SHADE
PROP ROOTS PROVIDES STRENGTH AND THE FLOW OF LIFE-GIVING WATER

COLUMNS INCORPORATE RECHARGE PITS, FACILITATING GROUNDWATER REPLENISHMENT AND DEMONSTRATING PASSIVE RAINWATER MANAGEMENT.



AUREUS PANELS ARE EASILY ASSEMBLED AND OPTIMIZING THE ROOF FOR AND VENTILATION.

THE ROOF, CONSTRUCTED FROM AUREUS PANELS, MIMICS THE IRREGULAR, OVERLAPPING FOLIAGE OF A BANYAN CANOPY, PROVIDING DIFFUSED LIGHT AND THERMAL COMFORT



CANOPY SHIELDS THE FLOOR FROM HEAVY RAINFALL

